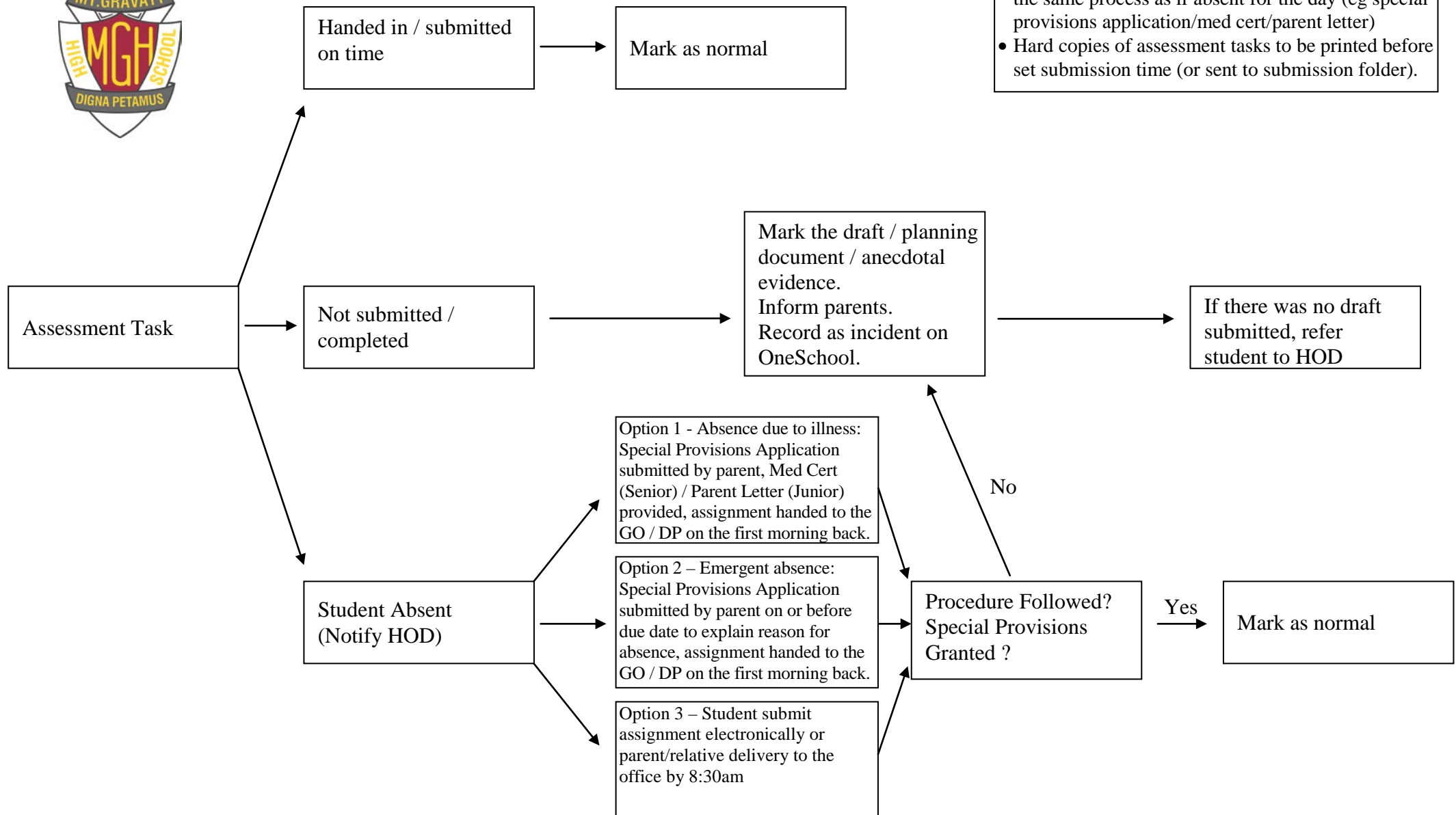


Mount Gravatt High School - Assessment Policy Flowchart



- Notes:
- Applications for an extension must be made to GO / DP with a medical certificate before the due date.
 - Students arriving late on the day an assignment is due, presentation to be made or test is to be sat will submit//present/sit the test but will need to follow the same process as if absent for the day (eg special provisions application/med cert/parent letter)
 - Hard copies of assessment tasks to be printed before set submission time (or sent to submission folder).